

USING TIMERS

Event timers let you to set up the receiver to tune in future programs and/or record them on a VCR. An “event” is a program, sports event, pay per view movie or anything else on satellite TV.

- You can set an *automatic* event timer for a program listed with start and stop times in the **Program Guide**.
- A *manual* event timer lets you set custom start and stop times for a timer.

Note: If you want to have the **Event Timer** record to a VCR, you must set up the receiver to control the VCR.

EVENT TIMER TYPES

Reminder - Reminds you that a program is about to start.

Auto-Tune - Reminds you that a program is about to start; tunes the receiver to the program when it begins.

VCR - Reminds you that a program is about to start; tunes the receiver to the program when it begins; starts a VCR to record the program.

Note: You can record only the program to which the receiver is tuned. If you open any menu while recording a program on videotape, the menu will also be recorded. If you change the volume or press the mute button, the volume change may be recorded - depending on how your TV and VCR are set up. If a program time changes by more than 24 hours, the timer will not operate.

EVENT TIMER FREQUENCIES

Once - Applies to a one-time program. If the program time changes, this timer operates at the *new* time. The receiver *deletes* this timer after the timer operates.

Mon.-Fri. - Applies to a program that is scheduled for Monday through Friday on the same channel at the same time each day.

Daily - Applies to a program that is scheduled for Monday through Sunday on the same channel at the same time each day.

Weekly - Applies to a program that is scheduled for once a week on the same channel at the same time on the same day.

Note: You can record only the program to which the receiver is tuned. If you open any menu (including the **Program Guide**) while recording a program on videotape, the menu also will be recorded. If a program time changes by more than 24 hours, the timer will not activate.

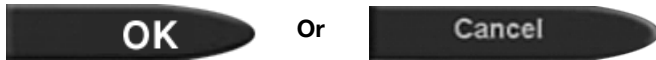
BEFORE AN EVENT TIMER OPERATES

Five minutes before an event timer operates, the receiver displays a small blinking “clock” symbol on the TV screen. This symbol disappears when the program begins. While the symbol is displayed, you may do either one of the following.

- Press the remote control CANCEL button to clear the symbol from the TV screen. This does *not* affect the timer; it *will still* operate.
- Press the remote control INFO button to see more information on the event timer. If you do this, you will have the following choices:



Select the **OK** or **Cancel** option to continue with the event timer.

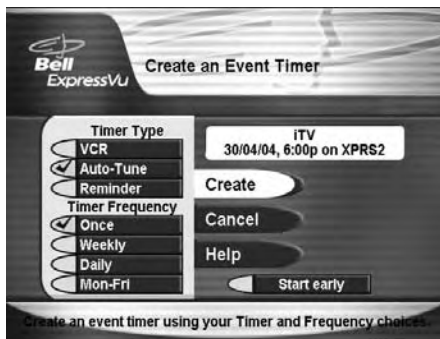


Select the **Stop Timer** or **No** option to stop the event timer.



Note: This stops *only* this instance of a *Mon.-Fri.*, *Daily* or *Weekly* timer. The timer *will* operate the next time it is scheduled. To stop all operations of such a timer, you *must* delete the timer. For a *Reminder Event Timer*, instead of having the option to stop the timer, you have the option to tune to the program.

SETTING UP AN AUTOMATIC EVENT TIMER



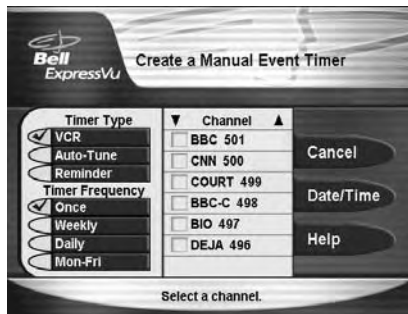
Remote
Buttons

Menu Options

1. Select a future program using the **Browse Banner, Themes Menu** or the **Program Guide**.
2. Select a **Timer Type** option.
3. Select a **Timer Frequency** option. Notice that a check mark displays in the box selected.
4. Select the **Create** option to save the event timer.
5. The receiver displays a timer symbol in the **Program Guide**, and also when you press the INFO button to get information about the program.



SETTING UP A MANUAL EVENT TIMER



Remote
Buttons

Menu Options

1. Press the MENU button.
2. Select the **Timers** option.
3. Select the **Create** option. The receiver displays the **Create a Manual Event Timer** menu.
4. Select a **Timer Type** option.

MENU



pqrs



5. Select a **Timer Frequency** option.

6. Select a channel:

- Highlight a channel using the UP or DOWN ARROW button. Then, press the SELECT button.
- Enter a channel number using the number buttons.



7. Select the **Date/Time** option. The receiver displays the **Set Date/Time for Manual Timer** menu.



8. Use the NUMBER PAD buttons to enter the **Start Time** (this includes selecting **AM** or **PM**) and the **End Time** (this includes selecting **AM** or **PM**).

9. Use the NUMBER PAD buttons to enter the **Date**.

10. Select the **Create Timer** option.

11. To create another event timer select the **Create** option again.



Note: You cannot set a manual event timer for a pay per view event.

QUICK RECORD

You can quickly create a one-time *VCR Event Timer*. Do the following.

Remote Buttons

Menu Options

1. Highlight a future program in the **Browse Banner**, the **Program Guide** or a **Themes** menu.



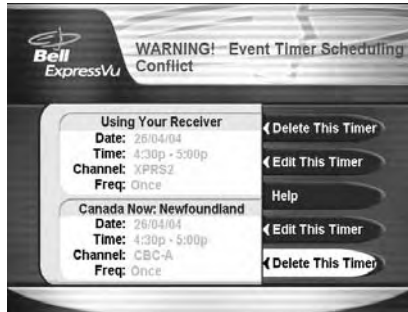
2. Press the RECORD button.

3. The receiver displays the **Create an Event Timer** menu.



OVERLAPPING EVENT TIMERS

If you try to create event timers for overlapping programs, the receiver displays a menu with the dates and times of both programs. The receiver also displays this menu if a program time has changed, causing one timer to overlap another. You *must* delete *or* edit one of the timers.



MAXIMUM NUMBER OF EVENT TIMERS

You cannot create an unlimited number of event timers. If you try to create too many, the receiver displays a menu giving you the option to delete an existing timer. If you do not delete an existing timer, you will *not* be able to create any new ones.

EDITING AN EVENT TIMER

- You can edit almost any feature of an event timer.
- You can edit both *automatic* and *manual* event timers.
- Editing an *automatic* event timer *converts* the timer to a *manual* event timer that operates at the times you set, *not* the actual program times.

Remote Buttons

Menu Options

1. Press the **Menu** button.
2. Select the **Timers** option.
3. The receiver displays the **Event Timer Management** menu.

MENU



pqrs



User Guide

4. Select the event timer that you want to edit.
A check mark appears in the box next to the event timer. Select the **Edit** option.



5. You may change the **Timer Type**, **Timer Frequency**, or **Channel**. To do this, select each option that you want.

6. If you want to change the **Start Time**, the **End Time**, or the **Date**, select the **Date/Time** option to display the **Set Date/Time for Manual Timer** menu. Otherwise, skip to step 9, below.



7. Use the NUMBER PAD buttons to enter the **Start Time** (this includes selecting **AM** or **PM**) and the End Time (this includes selecting **AM** or **PM**).

8. Use the NUMBER PAD buttons to enter the **Date**.

9. Select the **Create Timer** option.



10. To edit another event timer either highlight that timer and select the **Edit** option again, or if you do not want to edit another event timer, press the CANCEL button.

DELETING AN EVENT TIMER

Remote Buttons

Menu Options

1. Press the MENU button.

MENU



2. Select the **Timers** option.

pqrs



3. The receiver displays the **Event Timer Management** menu.



4. Select an event timer that you want to delete.
A check mark appears in the box next to the event timer.

5. Move to **Delete** and press SELECT on the remote.



Do this again for any other timer(s) that you want to delete.

SPECIAL CONSIDERATION WHEN USING EVENT TIMERS

- **For Locked Programs** - You must enter the receiver password before you can create an automatic event timer. You can create a manual event timer for a locked program without entering the password. However, if you do this, when the event timer operates the receiver may display only an error or password entry menu. If you have set a VCR Event Timer, the VCR will record only that menu.
- **For Pay Per View Programs** - You must order a pay per view program before you can create a timer for it.
- **For Blacked Out Programs** - If you set a timer for a program that is blacked out in your area, when the event timer operates the receiver may display only an error. If you have set a **VCR Event Timer**, the VCR will record only that message.

EVENT TIMER PERFORMANCE WHEN THE RECEIVER IS OFF

If the receiver is OFF at the time an **Auto-Tune** or **VCR Event Timer** is scheduled to operate, the receiver will turn ON. Once the event has ended, the receiver will turn OFF, unless you pressed any remote control or receiver front panel buttons during the time that the timer was active.

If the receiver is OFF at the time a **Reminder Event Timer** is scheduled to operate, the timer will turn the receiver ON and tune it to the channel you last watched. The receiver will then display the reminder menu. You will have a few seconds to respond. If you do not respond to the reminder menu, the receiver will turn OFF.

SETTING UP THE RECEIVER AND VCR TO USE A VCR EVENT TIMER

The receiver uses an IR blaster on the front panel which sends a signal to control the VCR. This signal is much stronger than the signal the remote uses, so it can bounce off walls or other objects on its way to the VCR. This works in most home setups. However, shelves or smoked glass doors between the receiver and the VCR may block the signal. Also, if the signal must cross a very large room, or bounce off curtains, it may not be strong enough to control the VCR. Make sure that nothing blocks the signal, and that the signal can bounce off relatively nearby, light-coloured, smooth surfaces.

Remote Buttons

Menu Options

1. Press the MENU button.
2. Select the **System Setup** option.
3. Select the **Installation** option.
4. Select the **VCR Setup** option.

MENU



mno

6

1

pqrs

7

5. Find the brand name of the VCR in the table in Chapter 4.

6. Set the code for the VCR using one of the following:

- Enter the first 3-digit code number from the table using the NUMBER PAD buttons **or**,
- Highlight each digit of the first VCR code, and then press the UP or DOWN ARROW button until you reach the correct number and then press SELECT.



7. Make sure the VCR is connected to one of the receiver outputs and is set to display on your TV. Consult your VCR user's guide.

8. Make sure the VCR is turned on. Insert a rewind tape on which you want to record.

Note: The receiver only starts and stops the VCR recording, but does not turn ON the VCR. You must do this yourself.

9. To test the new code, highlight the **Test** option. The receiver displays a message warning you to make sure the VCR is turned ON.



10. Press the SELECT button to start the test. Your VCR records for a few seconds, stops, and then rewinds. The receiver displays a message saying that your VCR test is complete. Follow the instructions on the message.

11. If your VCR did not do the test, enter another code from the table, and then repeat steps 9 through 11.

12. Once you have found the correct VCR code select the **Save** option to save the VCR code you entered, and return to the **Installation and Setup** menu.