

10 *Receiver Customization*

PERSONALIZING YOUR SATELLITE RECEIVER

Take a look through this chapter and you'll find out how to change settings on the receiver to make it just the way you like it. As an added bonus, if you find out that you don't like how it turned out, you can reset the receiver to the way it was when you got it.

Here's what's in this chapter:

- **USING CALLER ID**
- **CHANGING LANGUAGES**
- **USING CLOSED CAPTIONING**
- **USING DOLBY® SURROUND SOUND**
- **CHANGING THE PROGRAM GUIDE ORDER**
- **CHANGING THE GUIDE DISPLAY**
- **RESETTING TO FACTORY DEFAULTS**
- **SCHEDULING RECEIVER UPDATES**

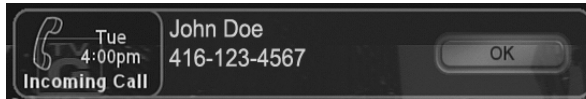
User Guide

USING CALLER ID

Caller ID displays on your TV the names of people and/or telephone numbers as they call you if you subscribe to Caller ID from your local phone company. To use this feature, make sure you have a phone line connected to the receiver and that the Caller ID feature is enabled.

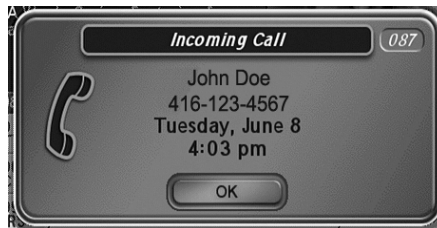
CALLER ID SCREENS

When you receive a call, you will see a Caller ID popup screen.



You can select OK to eliminate the message. If you do nothing, it will disappear after 20 seconds.

If you are using a menu when a call comes in, you will see a different Caller ID popup screen.

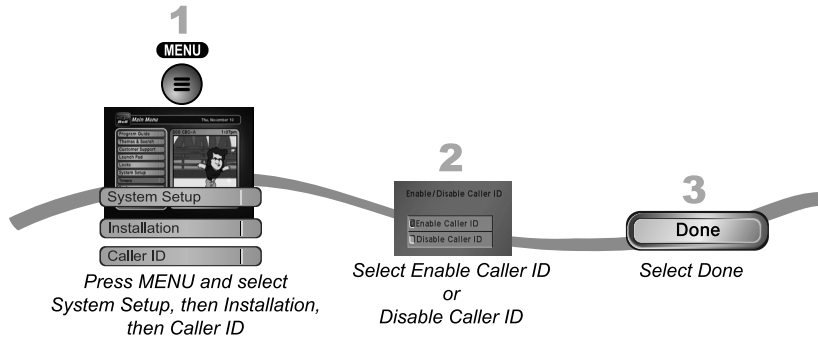


Receiver Customization Using Caller ID

10

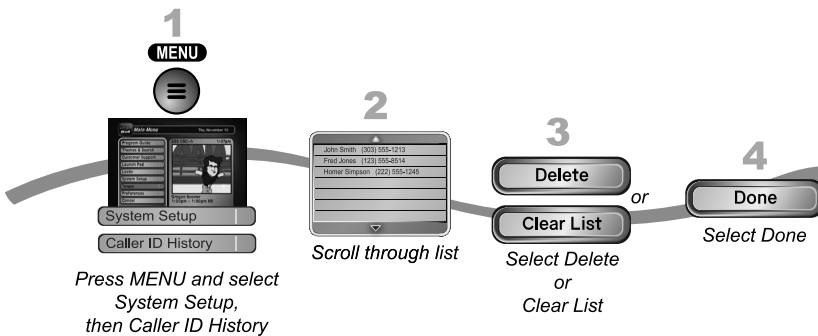
SETTING UP CALLER ID DISPLAY

Use these instructions to enable or disable Caller ID.



USING CALLER ID HISTORY

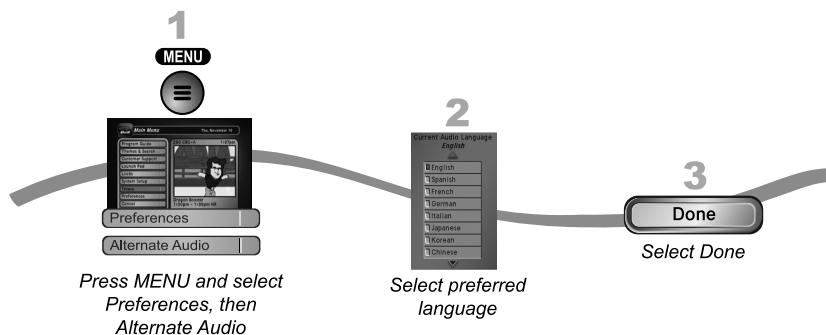
Use the following instructions to view and delete numbers from your Caller ID History.



User Guide

CHANGING LANGUAGES

You may be able to change the language of some programs. An alternate language may not be available for all programs. Some programs, such as movies, indicate at the beginning whether an alternate language or descriptive video is available. An alternate language applies only to the audio part of a program and does not change the language used in the menus displayed by the receiver. Descriptive video—not included on all channels and programs—is a feature for the visually impaired that describes what is happening during a program.



Note: If a program contains descriptive video, select Alternate.

Receiver Customization Using Closed Captioning

10

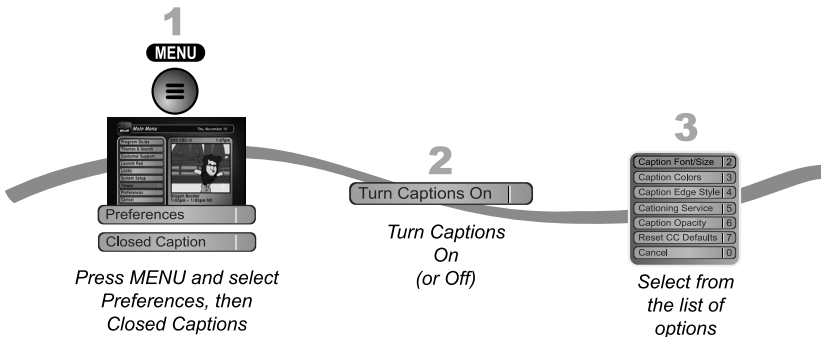
USING CLOSED CAPTIONING

The receiver supports a variety of closed captioning formats. If turned on in the receiver, closed captioning is displayed by the receiver through the HDTV Digital Audio/Video and YPbPr outputs for each format.

The RCA video and S-VIDEO receiver outputs provide closed captioning information in the audio/video signal. However a closed-captioning compatible TV is required to decode and display the captioning information the screen. Standard definition display of closed captioning is a function of the TV and not the receiver. Refer to your TV manual for enabling and setting up these closed captioning options.

Note: While the Program Guide information might show "CC" for a program, closed captioning information is provided by programmers and guide data providers to Bell TV. Therefore, while best efforts are made to provide the most accurate information, Bell TV is not ultimately responsible for the accuracy of Program Guide and Closed Captioning information provided by others.

1. Press MENU, select Preferences, and then Closed Captions.



2. Select Turn Captions On. The option will change to read Turn Captions Off.

3. Select your options:

- **Caption Font/Size** - Select the font and size that makes the captioning comfortable to read. When finished making changes, select Done.
- **Caption Colours** - Sets the background, letter, and edge colours. Choose the colour combinations that makes the captioning easy to see. When finished making changes, select Done.
- **Caption Edge Style** - Sets the edge style of the closed captioning text. When finished making changes, select Done.

User Guide

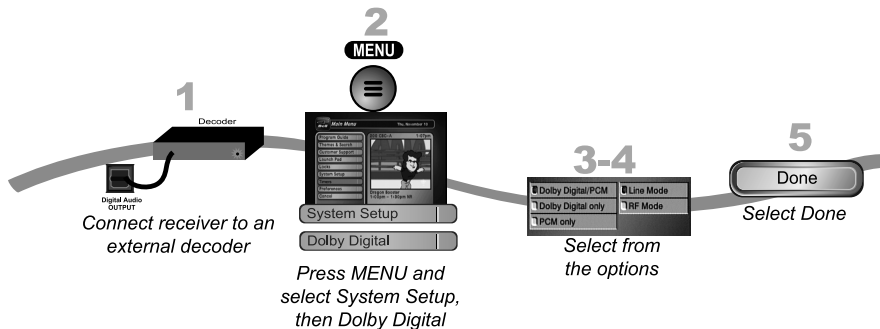
- **Captioning Service** - Selects the service you want to use. When finished making changes, select Done.
- **Caption Opacity** - Choose from Provider, Transparent (see-through), Translucent (semi-see-through), Solid, and Flashing. When finished making changes, select Done.
- **Reset CC Defaults.**

USING DOLBY® SURROUND SOUND

Dolby Digital gives you the capability to enjoy programs in surround sound. An external decoder is required to enjoy this feature. Refer to your decoder user's guide.

Note: Not all programs contain a Dolby Digital sound track.

The receiver uses an optical port for outputting digital audio. The optical output can provide two audio data types: Dolby Digital and Linear PCM (only Dolby Digital can provide full 5.1-channel sound).



1. Connect an external Dolby Digital decoder to the receiver's back panel Digital Audio Output using an optical cable (available at consumer electronics stores).
2. Press MENU, select System Setup, and then Dolby Digital to open the Dolby Digital Setup screen.
3. Select one of the following optical output options:
 - **Dolby Digital Only** - Select this option if the stereo system or amplifier can decode only Dolby Digital and will not process Linear PCM signals. See your amplifier's owner's manual for more details on the amplifier (and see the following table).

Receiver Customization Using Dolby® Surround Sound



- **PCM Only** - Select this option only if the stereo system or amplifier cannot decode Dolby Digital signals.
- **Dolby Digital/PCM** - Select this option only if the stereo system or amplifier can decode both Dolby Digital and Linear PCM signals.

The audio output is also dependent on what is present in the program you are watching. The table below shows what type of output you will hear:

<i>Optical Output Setting</i>	<i>Signal Present in Program</i>		
	Dolby Digital	PCM	Both
Dolby Digital Only	<i>Dolby Digital</i>	<i>PCM</i>	<i>Dolby Digital</i>
PCM Only	<i>PCM (downmix)</i>	<i>PCM</i>	<i>PCM</i>
Dolby Digital/PCM	<i>Dolby Digital</i>	<i>PCM</i>	<i>Dolby Digital</i>

Note: When both audio signals are present in the program, the receiver defaults to Dolby Digital output unless you have selected PCM Only.

Note: If you have selected Dolby Digital Only but there is only PCM audio in the program, you will hear nothing. This also applies to the analog audio outputs.

4. Select one of the following:

- **Line Mode.** When you use this setting, in comparison to RF Mode, the dynamic range is wider, which makes the music and loud noises louder, but voices quieter.
- **RF Mode.** When you use this setting, in comparison with Line Mode, the dynamic range is narrower, which makes music and loud noises quieter, but voices louder.

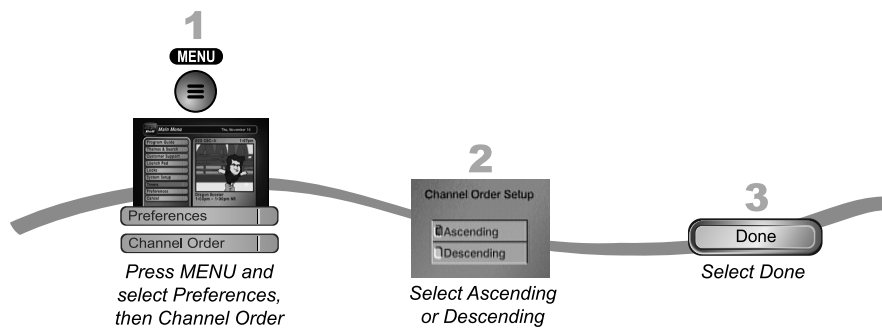
5. Select Done.

User Guide

CHANGING THE PROGRAM GUIDE ORDER

You can set up the Program Guide to list channels in descending order, with the highest channel number at the top, or in ascending order, with the highest channel number at the bottom.

Note: If you do not set a channel order, the Program Guide lists the channels in descending order.



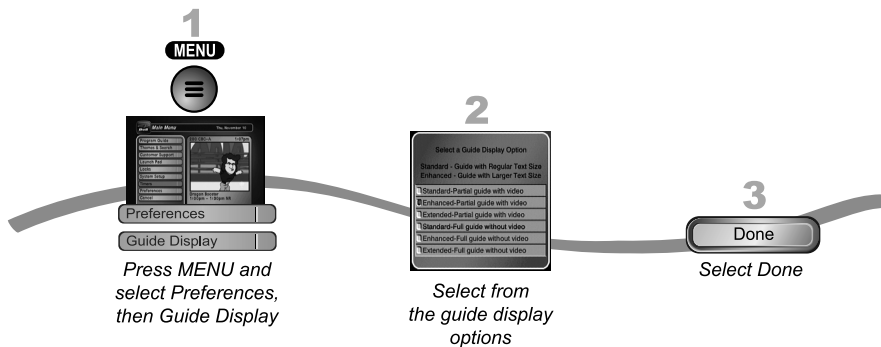
1. Press MENU, select Preferences, and then Channel Order.
2. Select Ascending or Descending.
3. Select Done.

Receiver Customization Changing The Guide Display

10

CHANGING THE GUIDE DISPLAY

The receiver comes set to display the Program Guide with video in the upper right corner. However, you can change the way the Program Guide displays.



1. Press **MENU**, select **Preferences**, and then **Guide Display**.

2. Select one of the following options:

- **Standard - Partial Guide with Video.** This option is preset when you first set up the receiver. The Program Guide displays video in the upper right corner and 1.5 hours of schedule per page.
- **Enhanced - Partial Guide with Video.** Choose this option if you'd like larger text on your Program Guide. The Program Guide displays video in the upper right corner and one hour of schedule per page.
- **Extended - Partial Guide with Video.** Choose this option if you'd like to see video in the upper right corner and three hours worth of schedule per page on the Program Guide.
- **Standard - Full Guide without Video.** Choose this option if you'd like to see more channels per page on the Program Guide.
- **Enhanced - Full Guide without Video.** Choose this option if you'd like to see more channels per page in large text on the Program Guide.
- **Extended - Full Guide without Video.** Choose this option if you'd like to see more channels and three hours of schedule per page on the Program Guide.

3. Select **Done**.

User Guide

RESETTING TO FACTORY DEFAULTS

You can reset the receiver to discard any changes you have made to the receiver, except for remote control address settings and locks. Resetting the receiver to factory default settings also discards all Favourite Lists except the All Chan and All Sub lists.

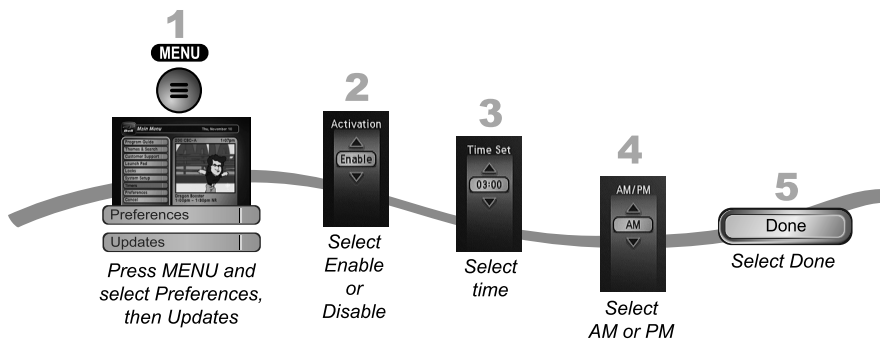
If you have set any locks on the receiver, and the receiver is locked, these locks will be kept. If the receiver is unlocked, your locks will be lost. You cannot reset the receiver to default settings to discard a password you have forgotten. No one but a Customer Service Representative can reset the receiver to bypass a receiver lock.

1. Press MENU, select System Setup, and then Factory Defaults.
The receiver displays a Warning message to confirm that you want to reset the receiver's preferences.
2. Select Yes.

SCHEDULING RECEIVER UPDATES

The receiver comes scheduled to update the Program Guide at 3:00 am every day. This section describes how to change the Updates settings.

Note: This feature does not interfere with scheduled timers.



Receiver Customization Tips



TIPS

- To take full advantage of Dolby Digital 5.1 surround sound, you need an optical cable and a stereo that supports this feature.
- Be sure to have the receiver connected to an active phone line and have Caller ID service from your phone company to use the Caller ID feature on this receiver.

QUESTIONS

- **How can I see who has called me recently?** Open your Caller ID History by pressing MENU, select System Setup and then Caller ID History on your remote control.
- **Why is my audio in another language?** You may have selected an alternate language. See the instructions on page 10-4 to change your preferred language.
- **How can I change the channel order in the Program Guide?** You can switch from ascending order (lowest to highest) or descending order (highest to lowest) by following the instructions on page 10-8.



User Guide

Notes

