

# 8 *Timers*

## **SETTING UP AND USING TIMERS**

---

Have you found yourself having to make a choice between watching your favourite shows and living your life away from television? This chapter shows you how to set up to record future programs on a VCR so that you'll never miss your favourite shows.

- **TIMERS**
- **USING THE TIMERS LIST**
- **SETTING UP AN AUTOMATIC TIMER**
- **SETTING UP A MANUAL TIMER**
- **DELETING A TIMER**

## User Guide

### TIMERS

---

A timer is your instruction telling the satellite receiver the programs you want to view in the future. For most VCR timers, you select a specific program on a specific channel, and tell the satellite receiver how often you want to record that program. Be sure to set up the receiver to control your VCR (see page 11-10).

#### TIMER TYPES

There are three types of timers:

- **VCR** - Records an event on a previously inserted tape for later viewing. Make sure you have your VCR connected and turned on when using this type of timer. Also, be sure to set up the receiver to tell the VCR to start/stop recording.
- **Auto** - Automatically changes the channel for live viewing of the event.
- **Reminder** - Creates an on-screen reminder when the event is about to air.

#### TIMER FREQUENCY

Deciding how often you want to watch a program will help you make the best choice:

- **Once** - Records a program once (good for movies, sporting events, etc.).
- **Weekly** - Records a program once a week, at that time, on that channel.
- **Daily** - Records a program once a day, at that time, on that channel.
- **Monday-Friday** - Records a program once a day, Monday through Friday, at the selected time, on that channel.

#### TIMERS LIST

Use the Timers List as described on page 8-4 to:

- View the general list of timers.
- Create a Manual timer.
- Edit a timer.

#### WHEN A TIMER STARTS A RECORDING

For two minutes before a timer starts a recording, the receiver may display a digital countdown on the TV screen. This symbol disappears when the program begins. While the symbol is displayed, you may do one of the following:

- Press CANCEL to clear the symbol from the TV screen. This does not stop the timer from starting.



- Press INFO or SELECT to see more information on the timer. If you do this, you have the following choices:
  - Select OK to continue with the timer.
  - Select Stop Timer to stop the timer.

**Note:** Pressing INFO about a timer event only works one time. Subsequently pressing INFO results in the current program's information being displayed in the normal way.

## WHEN THE RECEIVER IS OFF

If the receiver is off when a timer is scheduled, the receiver will:

- **VCR** - Turn on to record the event. Make sure you have your VCR turned on and a tape inserted when using this type of timer.
- **Auto** - Turn on for the event.
- **Reminder** - Turn on at the scheduled time. After a period of time, if you do nothing, the receiver will turn OFF.

## SPECIAL CONSIDERATIONS WHEN USING TIMERS

- **For Locked Programs** - You must enter the receiver password before you can create an automatic timer. You can create a manual timer for a locked program without entering the password. However, if you do this, when the timer operates, the receiver may display only an error or password entry menu.
- **For Pay-Per-View Programs** - You must order a Pay-Per-View program when you create a timer for it.
- **For Blacked Out Programs** - If you set a timer for a program that is blacked out in your area, when the timer operates the receiver may display only an error.

## User Guide

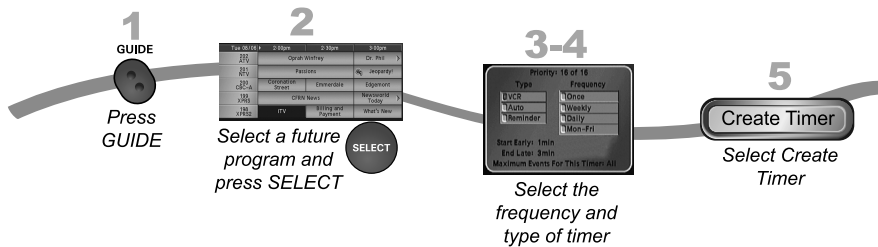
### USING THE TIMERS LIST



1. Press MENU and select Timers.
2. Select Timers. When the Timers screen opens, you can edit or delete the timers you have set.

### SETTING UP AN AUTOMATIC TIMER

You can create an automatic timer for a future event. The following instructions explain the simplest way to set up an automatic timer.



1. Find the future program you want to record using the Program Guide or Browse Banner.
2. Select the future event. The Create Timer screen displays.
3. Select the Timer Frequency (see page 8-2 for more details).
4. Select a Timer Type (see page 8-2 for more details).
5. Select Create Timer to finish making the new timer.

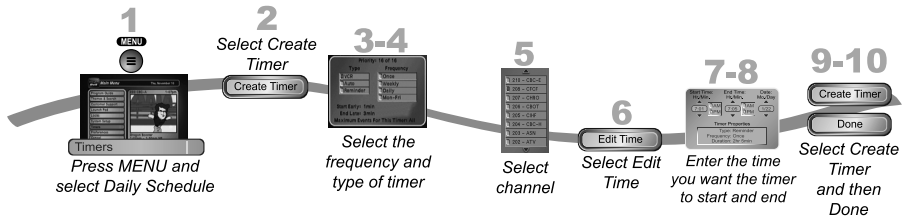
# Timers

## Setting Up A Manual Timer

8

### SETTING UP A MANUAL TIMER

A manual timer lets you set custom start and stop times for a timer.



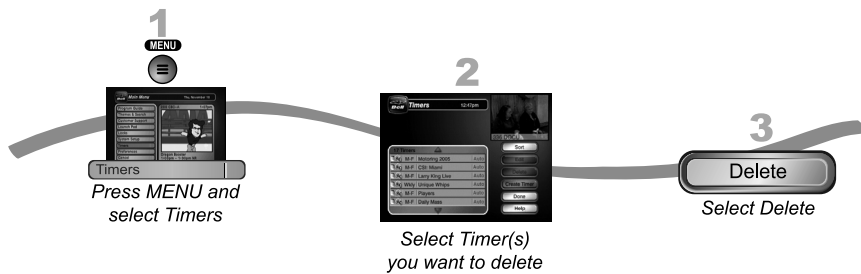
1. Press **MENU** and select **Timers**.
2. Select **Create Timer**.
3. Select the **Timer Frequency** (see page 8-2 for more details).
4. Select a **Timer Type** (see page 8-2 for more details).
5. Select the **channel**. Use the **UP/DOWN ARROWS**, **PAGE UP/DOWN**, or **NUMBER PAD** to find the channel.
6. Select **Edit Time**.
7. Set the **Start Time** and **End Time**, include **AM/PM** for each.
8. Set the **Date**.
9. Select **Create Timer**.
10. Select **Done**.

## User Guide

### DELETING A TIMER

---

When you no longer need a timer, you can delete it.



### OVERLAPPING TIMERS

---

If you try to create event timers for overlapping programs, the receiver displays a screen with the dates and times of both programs. The receiver also displays a Timer conflict message if a program time has changed, causing one timer to overlap another. You must delete or edit one of the timers.

### TIPS

---

- It's very important to leave the receiver enabled to receive updates. By doing this, the receiver can have the latest software and Program Guide information. Make sure the Updates feature is enabled as described on page 10-10.
- If your VCR does not respond to the receiver's commands, see if you accidentally left the protective film on the receiver's front panel.