

Personal Video Recording

RECORDING AND PAUSING LIVE PROGRAMS

Use the information in this chapter to record and control live TV.

- **WHAT IS PVR?**
- **PAUSING A PROGRAM**
- **REVERSING, FAST FORWARDING, AND SKIPPING**
- **SLOW MOTION AND FRAME-BY-FRAME**
- **RECORDING A LIVE PROGRAM**
- **PLAYING A RECORDED PROGRAM**
- **RECORDING WHILE WATCHING DIFFERENT PROGRAMS**
- **RECORDING OPTIONS**

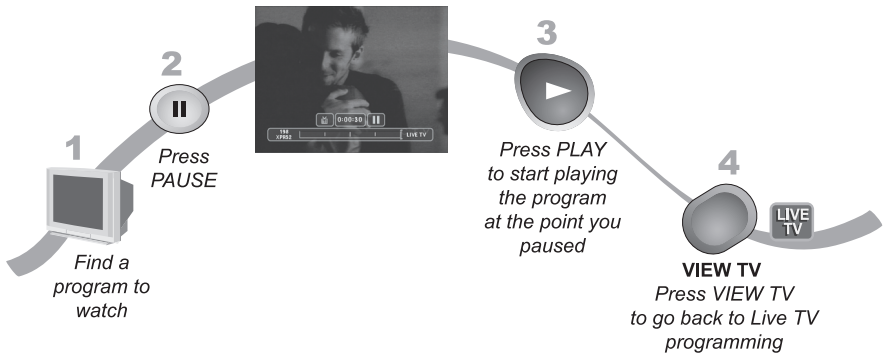
WHAT IS PVR?

The Personal Video Recorder (PVR) features let you watch TV the way you want. You can pause, reverse, or skip back through a program. Then you can continue watching TV. Also, you can record and play back programs with full digital audio and video quality, without a VCR.

For example, if you get a phone call while you watch a live or pre-recorded program, you can pause the program, talk on the phone for an hour, restart the program, and not miss any of the action.

You can move through a program forward and backward in slow motion or frame-by-frame while using the PVR's auto recording features while watching live or recorded programs.

PAUSING A PROGRAM

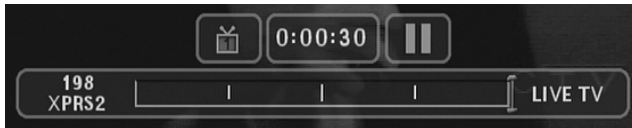


1. Find a program to watch.
2. Press PAUSE to pause the program.
3. Press PLAY to watch the program from where it paused.
4. Press VIEW TV to go back to live TV.



On some TVs, the presence of fixed images for extended periods of time may cause them to be permanently imprinted on the screen. Consult your TV user's guide for information on whether this is a problem for your TV, what operating/viewing restrictions apply to avoid this problem, and associated TV warranty coverage.

For a live program, the on-screen pause timer shows how long you've paused the program. The pause timer shows how far you're behind the live program. You can pause up to one hour for a live program. If you think you might be away from the TV for more than an hour but don't want to miss any of the program, consider recording the program (see page 8-5).



REVERSING, FAST FORWARDING, AND SKIPPING

This section describes how to use the PVR buttons to move forward and back quickly while you watch TV!



Press BACK once to reverse the program 4 times as fast as normal play. Press BACK twice to reverse at 15 times normal speed, three times to reverse at 60 times normal speed, and four times to reverse at 300 times normal speed. The on-screen bar shows how far you've gone. For a live program, you can only reverse back to the last channel change or back one hour, which ever occurs first.



Press FWD (forward) once to fast forward through the program 4 times normal speed. Press FWD twice to forward at 15 times normal speed, three times to forward at 60 times normal speed, and four times to forward at 300 times normal speed. The on-screen bar shows how far you've gone. Of course, you can't "forward" into the part of a "live" program that hasn't been broadcast yet.



Press SKIP BACK to skip back about 10 seconds in a program. Press this button again to skip back again.



Press SKIP FWD to skip ahead about 30 seconds in the program. Press this button again to skip ahead again.

SLOW MOTION AND FRAME-BY-FRAME

Your satellite receiver has features that allow you to slow down live TV. This section describes how to use the PVR buttons to use slow motion and frame-by-frame advance or reverse while you watch TV!



PAUSE



BACK

Press PAUSE and then press BACK to reverse the program in slow motion. Press BACK once to reverse the program 1/4 the speed as normal play. Press BACK twice to reverse at normal speed.



PAUSE



FWD

Press PAUSE and then press FWD to forward the program in slow motion. When you press FWD once the program advances at 1/15 the speed of normal play. Press FWD twice to forward at 1/4 as fast as normal play. Press FWD three times to play the program. Of course, you can't "forward" into the part of a "live" program that hasn't been broadcast yet.



PAUSE



SKIP
BACK

Press PAUSE and then press SKIP BACK to reverse the recording frame-by-frame.



PAUSE

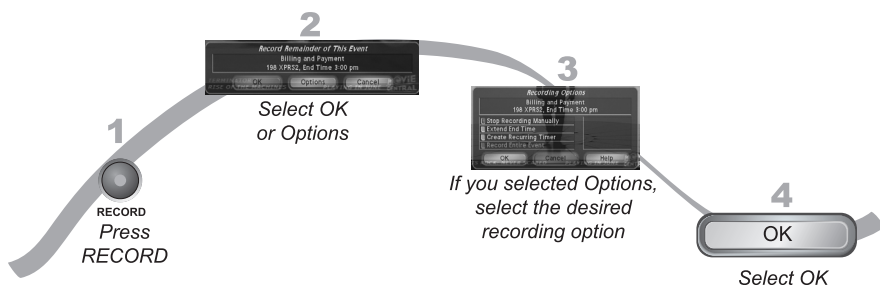


SKIP
FWD

Press PAUSE and then press SKIP FWD to advance the recording frame-by-frame.

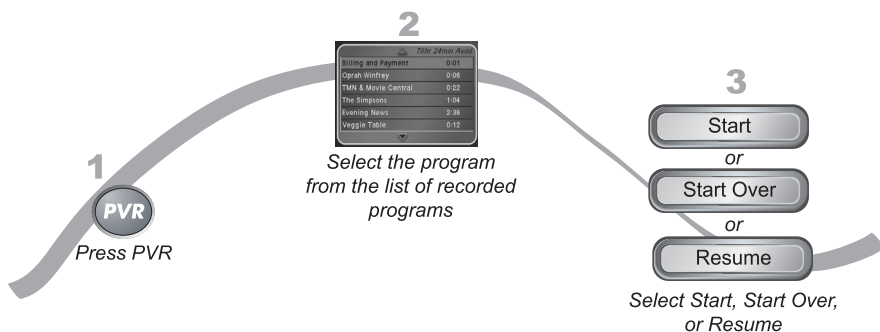
RECORDING A LIVE PROGRAM

Use the following instructions when you want to record a live program.



1. Press RECORD. Note that this feature may not work with all off-air channels.
2. Select OK to begin recording now or Options to customize your recording settings.
3. If you selected Options, see *Recording Options* on page 8-10 for your choices.
4. Select OK.

PLAYING A RECORDED PROGRAM



1. Press PVR to open the PVR Events menu.
2. Select an event on the PVR Events menu. This opens an information menu for that event.
3. Select Start. If you have already watched part of the recording, choose either Start Over or Resume.

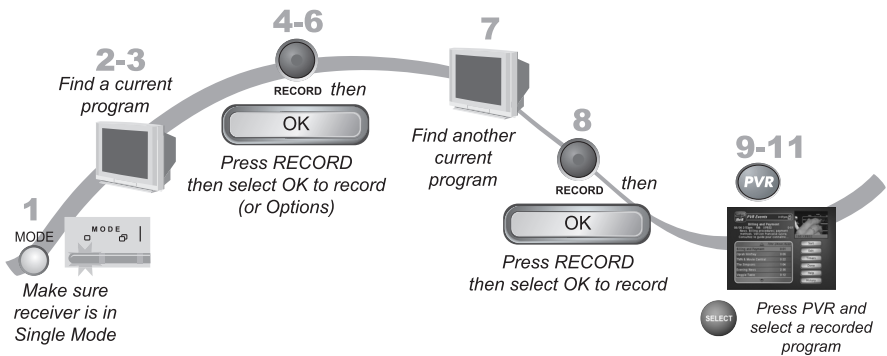
RECORDING WHILE WATCHING DIFFERENT PROGRAMS

This section describes the three basic ways to record a program while watching different programs at the same time.

- Recording in Single Mode (in the following section).
- Recording Events with Record Plus (on page 8-8).
- Recording Events without Record Plus (on page 8-9).

SINGLE MODE

In Single Mode, you can set up the satellite receiver to record two programs while watching one you've already recorded.



1. Make sure the receiver is in Single Mode by looking at the Single indicator on the front panel. See *Switching Between Single and Dual Mode* on page 2-5.
2. Press GUIDE to open the Program Guide. Find a program you want to record now. Note that this feature may not work with all off-air channels.
3. Press SELECT to tune to that program.
4. Press RECORD.
5. Select OK to begin recording now or Options to customize your recording settings.
6. If you selected Options, see *Recording Options* on page 8-10 for your choices.
7. Choose another program to watch as described on page 3-2.

Personal Video Recording

Recording While Watching Different Programs

8

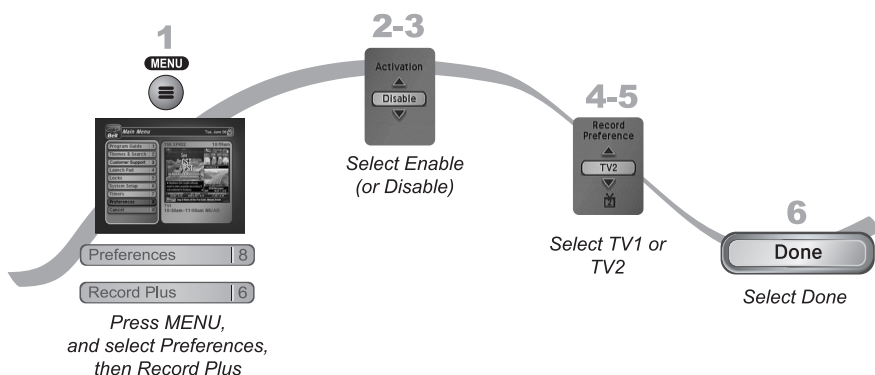
8. Press RECORD and select OK when the popup displays. You are now recording two programs at the same time.
9. Press PVR on the remote control. The PVR Events screen will open. You should see the two programs that are recording indicated by the red dot next to the listings.
10. Select a program that you recorded earlier and start the playback.
11. You should now be watching a pre-recorded program while the receiver is recording the other two events (programs).

DUAL MODE AND RECORD PLUS

Another feature that adds flexibility to the way you watch TV is Record Plus. When Record Plus is enabled, you can decide which receiver output (TV1 or TV2) will usually record your events as a default location. This feature is only available in Dual Mode.

USING RECORD PLUS

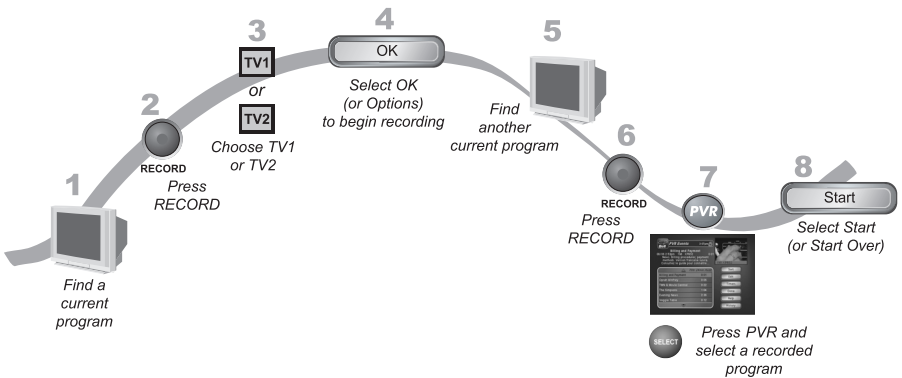
The following instructions describe how to enable Record Plus.



1. Press MENU, select Preferences (8), and then Record Plus (6) to open the Record Plus screen.
2. Highlight the Activation option.
3. Use the UP or DOWN ARROW to set the Activation option to Enable or Disable.
4. Highlight the Record Preference.
5. Use the UP or DOWN ARROW to set the Record Preference option to TV1 or TV2.
6. Select Done.

RECORDING EVENTS WITH RECORD PLUS

When Record Plus is enabled, you can record two programs while watching a prerecorded program if no one is using the other tuner.



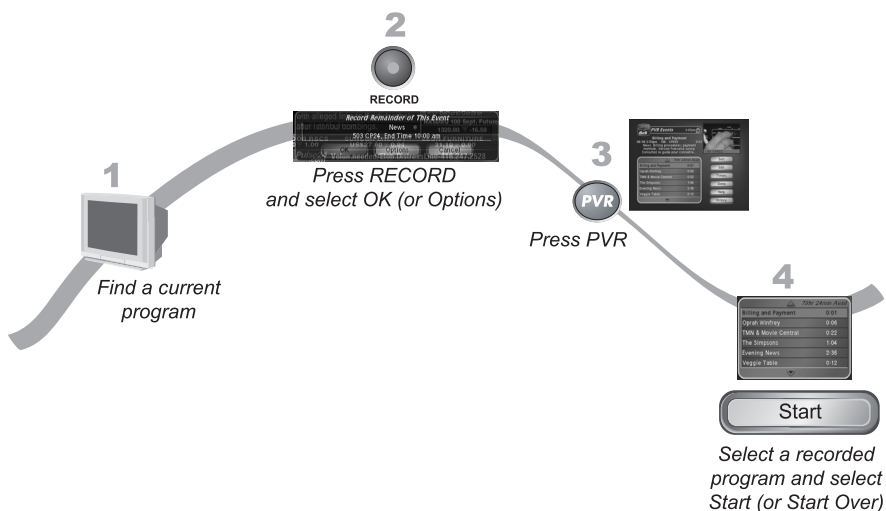
1. Select a program you want to record.
2. Press RECORD.
3. When the Record Remainder of This Event screen displays, select one of the following:
 - From TV1, select TV2.
 - From TV2, select TV1.

Note: When recording using Record Plus, it is possible for someone at the other TV to cancel your recording.

4. Select OK to begin recording now or Options to customize your recording settings. If you selected Options, see *Recording Options* on page 8-10 for your choices.
5. Choose another program to watch as described on page 3-2.
6. Press RECORD. Customize your options as described on page 8-10.
7. Press PVR on the remote control. The PVR Event screen will open. You should see the two programs that are recording indicated by the red dot next to the listings.
8. Select a program that you recorded earlier (one that is not recording now), then select Start or Start Over. You should now be watching a pre-recorded program while the receiver is recording the other two events (programs).

RECORDING EVENTS WITHOUT RECORD PLUS

While in Dual Mode with Record Plus disabled, you can set up the satellite receiver to record from TV1 and TV2 at the same time.



1. Find a program to watch as described on page 3-2. Note that this feature may not work with all off-air channels.
2. Press RECORD. A message will display asking whether you want to record the remainder of the program. Select OK to begin recording now.
3. Press PVR. The PVR Event screen will open. You should see the program that is recording indicated by the red dot next to the listings.
4. Select a program that you recorded earlier (one that is not recording now), then select Start or Start Over. You should now be watching a pre-recorded program while the receiver is recording the other program.

RECORDING OPTIONS

When you set up a timer, you can choose from the following options:

- **Stop Recording Manually** - The receiver will record until you press STOP.
- **Extend End Time** - You can extend the stop time for the recording. This option is useful for programs that might run overtime, like sporting events or awards shows.
- **Create a Recurring Timer** - You can set up a timer like the one described in *Setting Up a Timer* on page 9-6.
- **Record the Entire Event** - The receiver stops recording at the end of the event. This selection is available only if the receiver was tuned to the channel at the beginning of the program.

Note: If you tune to a program after it starts, you can record only the part of the program after you tune to it.

TIPS

- If you have a program paused, press PLAY to watch the program. Also, press this button to switch from forward or reverse to play.
- Press VIEW TV to catch up with the program as it's showing now.