

# *1* **Introduction**

## **INTRODUCTION TO BELL TV SERVICES**

---

So you bought yourself a new receiver and you want to know how it works, right? Take a look through this guide and you'll quickly learn how to use all of the features. This chapter familiarizes you with your Bell TV satellite TV receiver.

- **WELCOME**
- **HOW TO USE THIS GUIDE**
- **ABOUT YOUR BELL TV ACCOUNT**
- **WATCHING TV NOW**
- **ADDITIONAL SERVICES**
- **ABOUT SATELLITE TV RECEPTION**
- **WHY CONNECT TO A PHONE LINE**
- **MOVING ON-SCREEN LOGO**

# User Guide

## WELCOME

---

Thank you for choosing Bell TV. You are about to experience the excitement and convenience of our Direct Broadcast Satellite (DBS) service, which delivers the very best picture and sound quality. Bell TV consistently provides the latest products and satellite-delivered services — with high performance, ease of operation, and a wide variety of entertainment options.

Your new Bell TV Personal Video Recorder (PVR) receiver has two tuners for record and playback in standard or high definition. Additionally, the PVR features and a host of other functions make it one of the most versatile and exciting devices in home entertainment.

This satellite receiver lets you decide how you watch TV. You can record and play back audio and video with full digital quality. You can pause a live program and not miss any of the action or you can record a program to watch later, without a VCR.

## HOW TO USE THIS GUIDE

---

This section explains how the guide is divided and the conventions used throughout.

### GUIDE OVERVIEW

The information in this guide is separated into several chapters to make it easy for you to find exactly what you're looking for:

- *Chapter 1 - Introduction* gives you a brief overview of Bell TV and your new receiver.
- *Chapter 2 - Receiver and Remote Controls* explains the basic features of your system and how to use the remote controls, front panel buttons, and back panel connections.
- *Chapter 3 - Finding Programs to Watch* describes how to change channels and look for programs.
- *Chapter 4 - Pay-Per-View* shows you how to order and watch Pay-Per-View.
- *Chapter 5 - Favourites Lists* explains how to create, name, and use favourites lists.
- *Chapter 6 - Locks* explains how to set locks and passwords.
- *Chapter 7 - Interactive TV* describes how to use the Interactive TV features of your satellite TV system.
- *Chapter 8 - Personal Video Recording* explains how to use the recording features of your satellite TV receiver to maximize your viewing pleasure.
- *Chapter 9 - Record Future Programs* shows you how you can record and play back your favourite programs when you want to watch them.
- *Chapter 10 - Remote Control Setup* contains instructions for programming your remote to control your satellite receiver and equipment like a TV or VCR.
- *Chapter 11 - Receiver Customization* shows you how to customize your receiver.
- *Chapter 12 - Connections and Setup* explains how to connect your satellite receiver to your TV and equipment like a VCR.

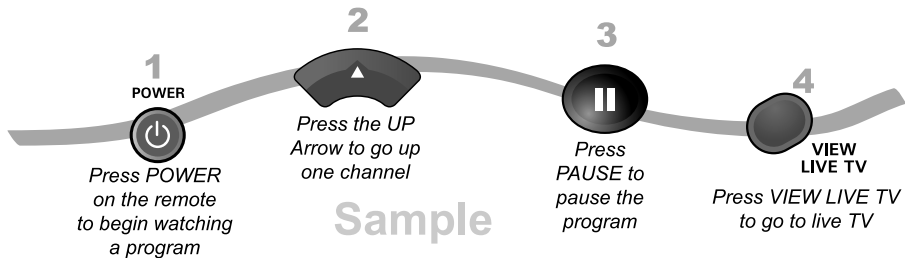
# Introduction

## How To Use This Guide

# 1

### GUIDE CONVENTIONS

- The names of remote control buttons are all uppercase.  
**Example:** Press SAT.
- *Select* means to move the highlight to an on-screen option or choice in a list and press SELECT on the remote control.  
**Example:** Select the Locks option.
- The instructions in this guide are shown in two ways:
  - Instructions in the form of pictures are handy if you'd like to learn something quickly. These instructions are numbered left to right as shown in the sample below.
  - Instructions that are written out are helpful if you'd like to learn more details.



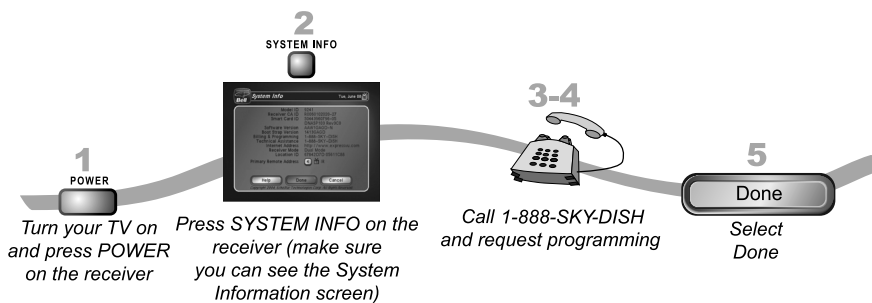
## User Guide

### ABOUT YOUR BELL TV ACCOUNT

This section describes how to order your packages and provides information on how to find information about your Bell TV account.

#### ORDERING YOUR PROGRAMMING PACKAGES

Before you can enjoy your new receiver, order your programming packages.



1. Press POWER on the front panel to turn on the receiver.
2. Press SYSTEM INFO on the front panel to display the receiver's System Information menu on the nearby TV screen.
3. Call 1-888-SKY-DISH and tell the Customer Service Center the system has been installed and you would like to begin receiving services. A representative will explain the available program packages. Give the representative information from the System Information screen, as requested.
4. Your services will be turned on via the satellite signal. This process usually takes just a few minutes.
5. Select DONE.

# Introduction Watching TV Now



## WHERE TO FIND INFORMATION ON YOUR ACCOUNT

If you want to know about charges to your Bell TV account or if you would like to make changes to your programming packages, be sure to have your account information handy and choose one of the following:

- Go to our website at [www.bell.ca/selfcare](http://www.bell.ca/selfcare).
- Call Bell TV by calling 1-888-SKY-DISH.

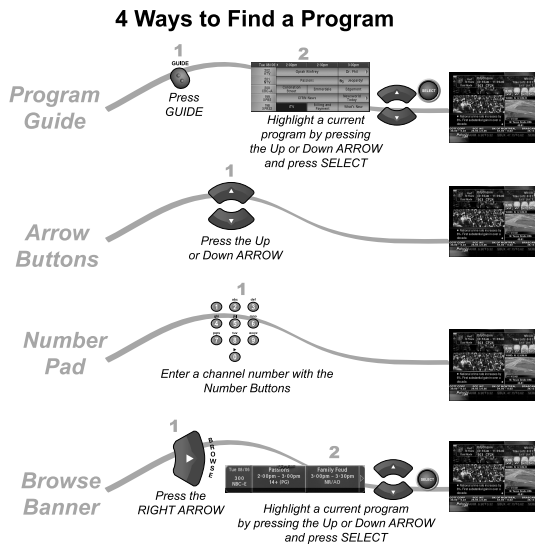
**Note:** Additional authorization may be required before high definition programming and/or off-air broadcasts can be viewed; additional fees may apply.

## WATCHING TV NOW

After you have ordered your programming package, you can begin enjoying the features of your new satellite TV receiver. When you complete these simple tours, you'll be familiar with the remote control and be able to find a program to watch; pause live TV; and record your favourite shows.

## FINDING A PROGRAM TO WATCH

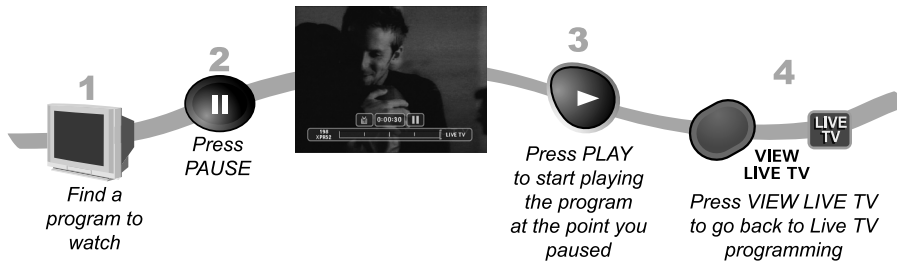
You're already itching to use your remote control, so pick it up now and find something to watch. If you want to know more about watching TV, see *Chapter 3 - Finding Programs to Watch* starting on page 3-1.



## User Guide

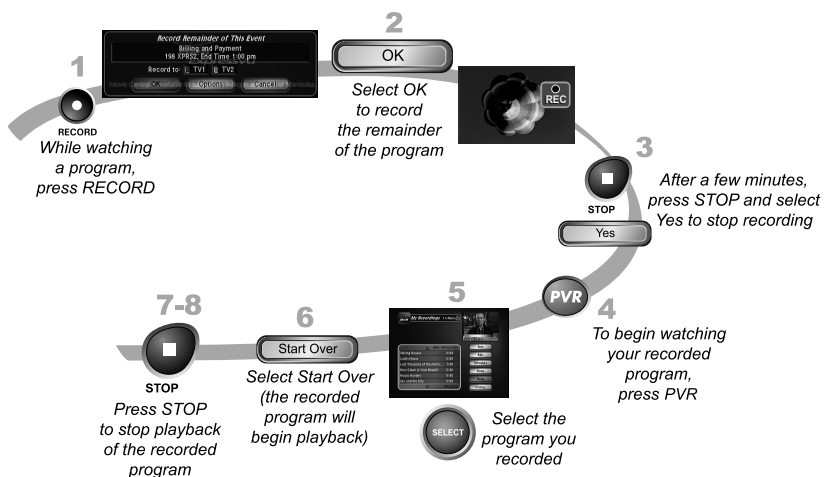
### PAUSING LIVE TV

Here's something you can't do with regular old TV: pause live TV because someone's at the door or calling you on the phone or there's something you just have to do right now. For more about the pause feature of your receiver, see *Pausing a Program* on page 8-2.



### RECORDING AND PLAYING BACK A PROGRAM

Take this tour to learn how to make basic recordings of your favourite shows. For more about the PVR features of your receiver, see *Chapter 8 - Personal Video Recording* starting on page 8-1.



## *Introduction* *Additional Services*



### **ADDITIONAL SERVICES**

#### **PAY-PER-VIEW**

Catch all the action on Pay-Per-View. Take a break from regular TV and order the latest movies, sports, and special events. For details on ordering Pay-Per-View events, see page 4-2. Be sure to connect an active phone line to your receiver before you order a Pay-Per-View event (see the instructions on page 12-10).

#### **INTERACTIVE TV**



At *Interactive TV* (press ITV on your remote control), you'll find news, sports scores, weather information, games, and more.

## User Guide

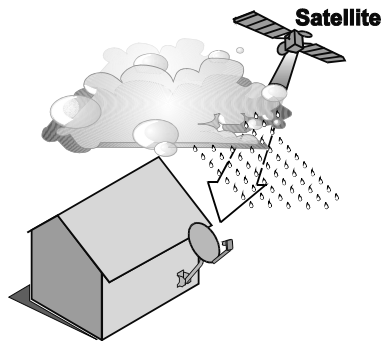
### **ABOUT SATELLITE TV RECEPTION**

Satellite television uses satellites in a stationary orbit over the Earth to deliver television and audio programming. This type of orbit enables the satellites to stay aligned over one place on the surface of the Earth. Once the satellite dish is aimed at the satellite, the dish does not have to move to follow it.

**Here's something interesting! Noted science fiction author Arthur C. Clarke calculated the orbit that causes satellites to remain stationary in the sky. To this day the 22,000 mile high orbit bears the name Clarke Belt.**

#### **RAIN AND SNOW FADE**

Heavy rain, snow, or dense cloud cover can reduce the satellite signal, which may interrupt your programming service. Your service will return after the weather condition has passed. Aiming the satellite dish to get the strongest signal during installation, will help prevent rain and snow from interrupting the signal.





## Introduction

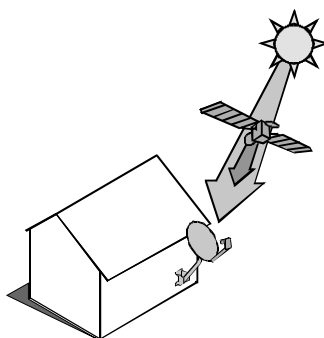
# Why Connect To A Phone Line

# 1

### SOLAR INTERFERENCE

Twice a year, the sun moves to a position behind the Bell TV satellite as it orbits the Earth. This event occurs during a few days at the beginning of the spring and the beginning of the autumn and lasts only a few minutes.

During these brief periods, you will not be able to see programs on Bell TV. When the sun has moved from behind the satellite, the programs will reappear. This is an unavoidable natural event for all television involving the use of satellites and has an adverse effect on many program providers.



### WHY CONNECT TO A PHONE LINE

Your satellite receiver is equipped with a standard telephone jack that you use to connect to an active telephone line. Keep the receiver connected to an active telephone line so that you will be able to order pay-per-view programs using your remote control, use all of the *Interactive TV* features, and other services from Bell TV (see the instructions on page 12-10).

### MOVING ON-SCREEN LOGO

Whenever the receiver is turned off using the remote control or front panel POWER button, you will see the Bell TV logo moving around on your TV screen. This feature is included with your receiver to assure you that the connections between your receiver and TV(s) are not lost. Press POWER or SELECT on the remote control to resume watching satellite TV programming. Make sure you are using the correct remote for your TV-viewing location (see page 2-6 for details).



## User Guide

### TIPS

---

- **Always have the latest software** - Turn off the receiver when you're not using it.
- **Order Pay-Per-View with your remote control** - Keep an active phone line connected to the receiver. You will have Pay-Per-View at your fingertips.

### QUESTIONS

---

- **How do I find something to watch?** Refer to page 5. For more information on finding something to watch, see *Chapter 3 - Finding Programs to Watch*.
- **Why are some of the channels red in the Program Guide?** The channels that are red in the Program Guide are those which are not currently in your subscription. If you'd like to watch those channels, call 1-888-SKY-DISH or go to [www.bell.ca/selfcare](http://www.bell.ca/selfcare).