

6 Locks

SECURING YOUR RECEIVER AND ACCOUNT

An important concern to parents is the ability to protect their children. With high tech television comes greater potential for unwanted programming beamed into your home. Use the safeguards described in this chapter to set up and use locks.

- **WHAT ARE LOCKS?**
- **LOCKING AND UNLOCKING YOUR RECEIVER**
- **CREATING OR CHANGING RATINGS LOCKS**
- **CREATING OR CHANGING CHANNEL LOCKS**
- **LOCKING OR UNLOCKING PAY-PER-VIEW CHANNELS**
- **HIDING ADULT CONTENT OR LOCKED CHANNELS**
- **LOCKING OR UNLOCKING THE FRONT PANEL**

User Guide

WHAT ARE LOCKS?

Locks allow you to password-protect programming based on ratings, or on a channel-by-channel basis. When you have locked the receiver:

- If you try to access a locked item or open the Locks menu, the receiver displays a message prompting you to enter the password.
- The receiver allows you three attempts to enter the correct password. If you fail to enter the correct password, the receiver does not allow you to try again for several minutes.
- If you enter the correct password, you can access the locked item or open the Locks menu.
- If you exit a locked item or close the Locks menu, you must enter the password to access the item.

Locking the receiver is a two-step process:

1. Create the locks that you want.
2. Lock the receiver.

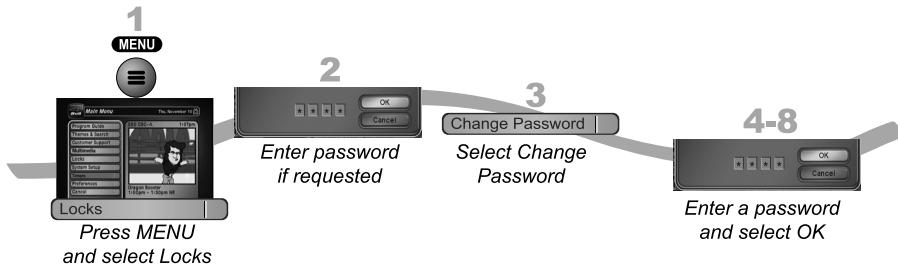
When the receiver is locked, anyone who wants to access locked items must enter the password.

Locks Creating Or Changing A Password

6

CREATING OR CHANGING A PASSWORD

The first thing to do before using the receiver locks is set up your password.

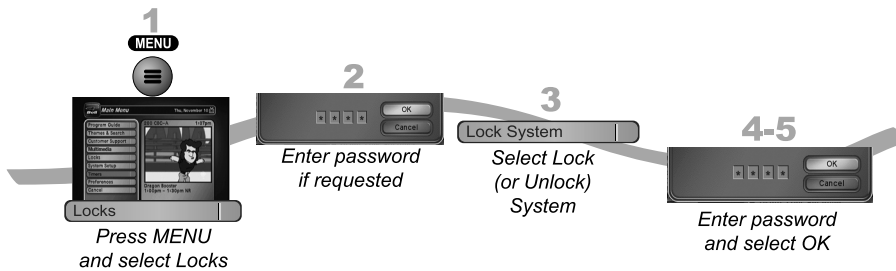


1. Press MENU and select Locks.
2. If the receiver is locked, enter the password using the NUMBER PAD. The receiver displays stars (*) as you enter the digits of the password. Select OK.
3. Select Change Password.
4. Enter the current password using the NUMBER PAD. Select OK.
5. Press SELECT.
6. Enter the new password using the NUMBER PAD. Select OK.
7. Enter the new password again for confirmation, using the NUMBER PAD. The receiver displays stars (*) as you enter the digits of the password. Select OK.
8. Memorize the new password. From now on, enter this password to lock or unlock the receiver. If you forget your password, you will need to speak with a Customer Service Representative.

User Guide

LOCKING AND UNLOCKING YOUR RECEIVER

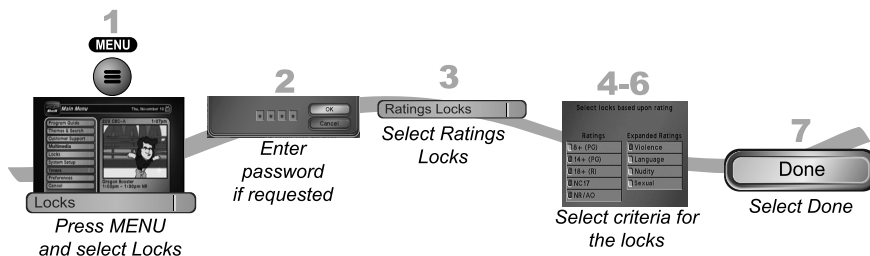
You must lock the receiver for any receiver locks you set to take effect. To lock the receiver, you must first create a password (see *Setting Up a Password* in the previous section). Be sure to refer to this section whenever you set any lock on your receiver.



1. Press MENU and select Locks.
2. If the receiver is locked, enter the password using the NUMBER PAD. The receiver displays stars (*) as you enter the digits of the password. Select OK.
3. Select Lock System or Unlock System. If you are locking the receiver, the receiver displays a message prompting you to enter a password.
4. Enter a password, using the NUMBER PAD. The receiver displays stars (*) as you enter the digits of the password. Select OK.
5. Confirm the password by re-entering it. Select OK. All the locks you have set are now in effect.

CREATING OR CHANGING RATINGS LOCKS

You can lock programs based on Canadian ratings (8+ (PG), 14+ (PG), 18+ (R), NC17 and NR/AO.) and expanded ratings (violence, language, etc.).



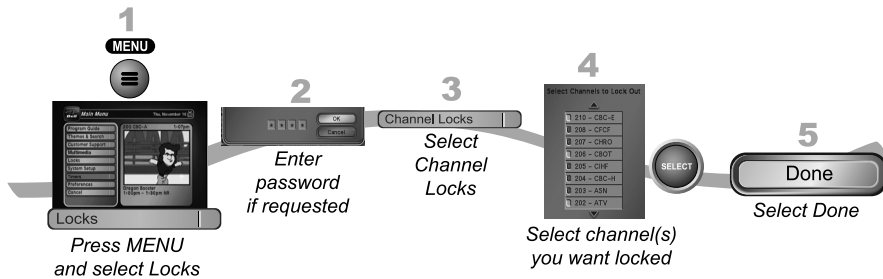
Locks Creating Or Changing Channel Locks

6

1. Press MENU and select Locks.
2. If the receiver is locked, enter the password using the NUMBER PAD. The receiver displays stars (*) as you enter the digits of the password. Select OK.
3. Select Ratings Locks.
4. Highlight the least restrictive rating that you want to block. Press SELECT to lock the highlighted rating and all ratings more restrictive than it (for example, locking PG-14 automatically locks R, NC-17 and NR/AO).
5. Select the expanded rating code(s), if you want to also lock these ratings.
6. To unlock a rating code, select the code.
7. Select Done. Make sure the receiver is locked as described on page 6-4.

CREATING OR CHANGING CHANNEL LOCKS

You can lock any channel, including Pay-Per-View and off-air channels. This type of lock keeps anyone from viewing these channels unless they enter the correct password.

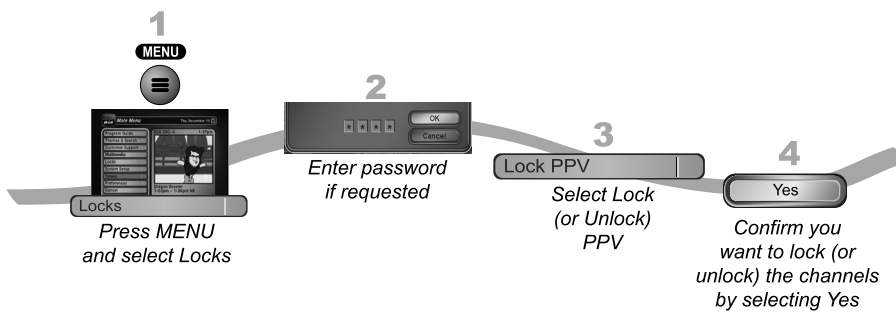


1. Press MENU and select Locks.
2. If the receiver is locked, enter the password using the NUMBER PAD. The receiver displays stars (*) as you enter the digits of the password. Select OK.
3. Select Channel Locks.
4. Highlight and select each channel that you want to lock or unlock. Press UP or DOWN ARROW to highlight the channel. You can also move to each channel number using the NUMBER PAD. If the checkbox next to the channel has a checkmark, the channel is locked.
5. Select Done. Make sure the receiver is locked as described on page 6-4.

User Guide

LOCKING OR UNLOCKING PAY-PER-VIEW CHANNELS

This locks all Pay-Per-View channels. This type of lock keeps anyone from viewing these channels by using the UP or DOWN ARROWS or the remote control NUMBER PAD. You also can lock individual Pay-Per-View channels by using channel locks.



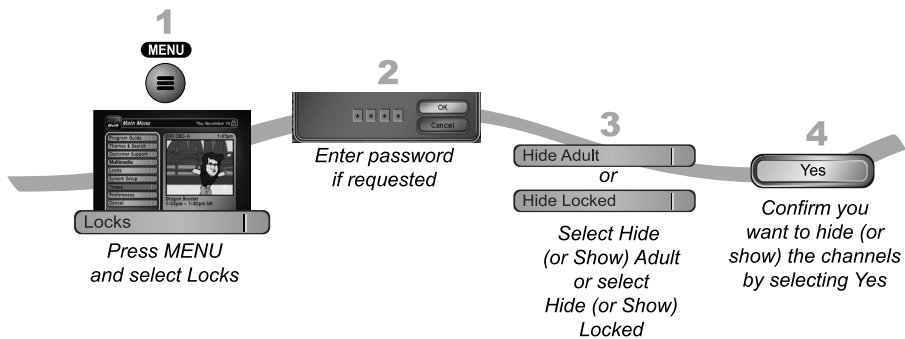
1. Press MENU and select Locks.
2. If the receiver is locked, enter the password using the NUMBER PAD. The receiver displays stars (*) as you enter the digits of the password. Select OK.
3. Select Lock PPV or Unlock PPV.
4. Select Yes. Make sure the receiver is locked as described on page 6-4.

Locks Hiding Adult Content Or Locked Channels

6

HIDING ADULT CONTENT OR LOCKED CHANNELS

When you hide adult channels or locked channels, you prevent the Program Guide, Themes lists, and the Browse Banner from displaying adult channels. It also prevents anyone from choosing these channels by using the UP or DOWN ARROWS or the remote control NUMBER PAD.

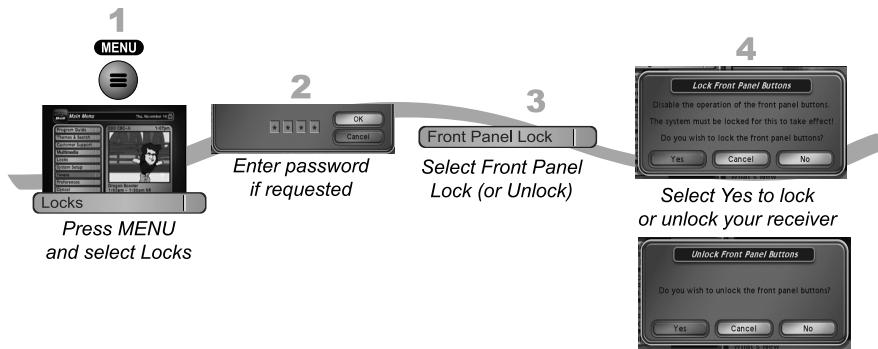


1. Press MENU and select Locks.
2. If the receiver is locked, enter the password using the NUMBER PAD. Select OK.
3. Select Hide Adult or Show Adult.
4. Select Yes. Make sure the receiver is locked as described on page 6-4.

User Guide

LOCKING OR UNLOCKING THE FRONT PANEL

This lock keeps anyone from using the front panel buttons unless they enter the correct password, but it does not lock the remote control buttons.



1. Press **MENU** and select **Locks**.
2. If the receiver is locked, enter the password using the **NUMBER PAD**. The receiver displays stars (*) as you enter the digits of the password. Select **OK**.
3. Select **Front Panel Lock** to lock or unlock the front panel.
4. Select **Yes**. To activate the **Front Panel Lock**, you must lock the receiver. Make sure the receiver is locked as described on page 6-4.

Locks Tips



TIPS

- If the receiver displays a message prompting you to enter a password, the receiver is locked.
- When you lock a rating, you also lock all other more restrictive ratings. For example, if you lock PG-14 rated programs, then all programs with the R, NC-17, and NR/AO ratings are also locked.

QUESTIONS

- **Why didn't a lock I set take effect?** You have to lock the receiver for any lock you set to take effect. See page 6-4 for details.
- **What do I do if I forget my password?** If you forget your password, you will need to speak with a Customer Service Representative.



User Guide

Notes

